

- Feeding and Conveying Equipment
- Drying and Dehumidifying Equipment
- Dosing and Mixing Equipment
- Heating and Cooling Equipment
- Granulator and Recycling Equipment

ERAT

TRUST AUTOMATION

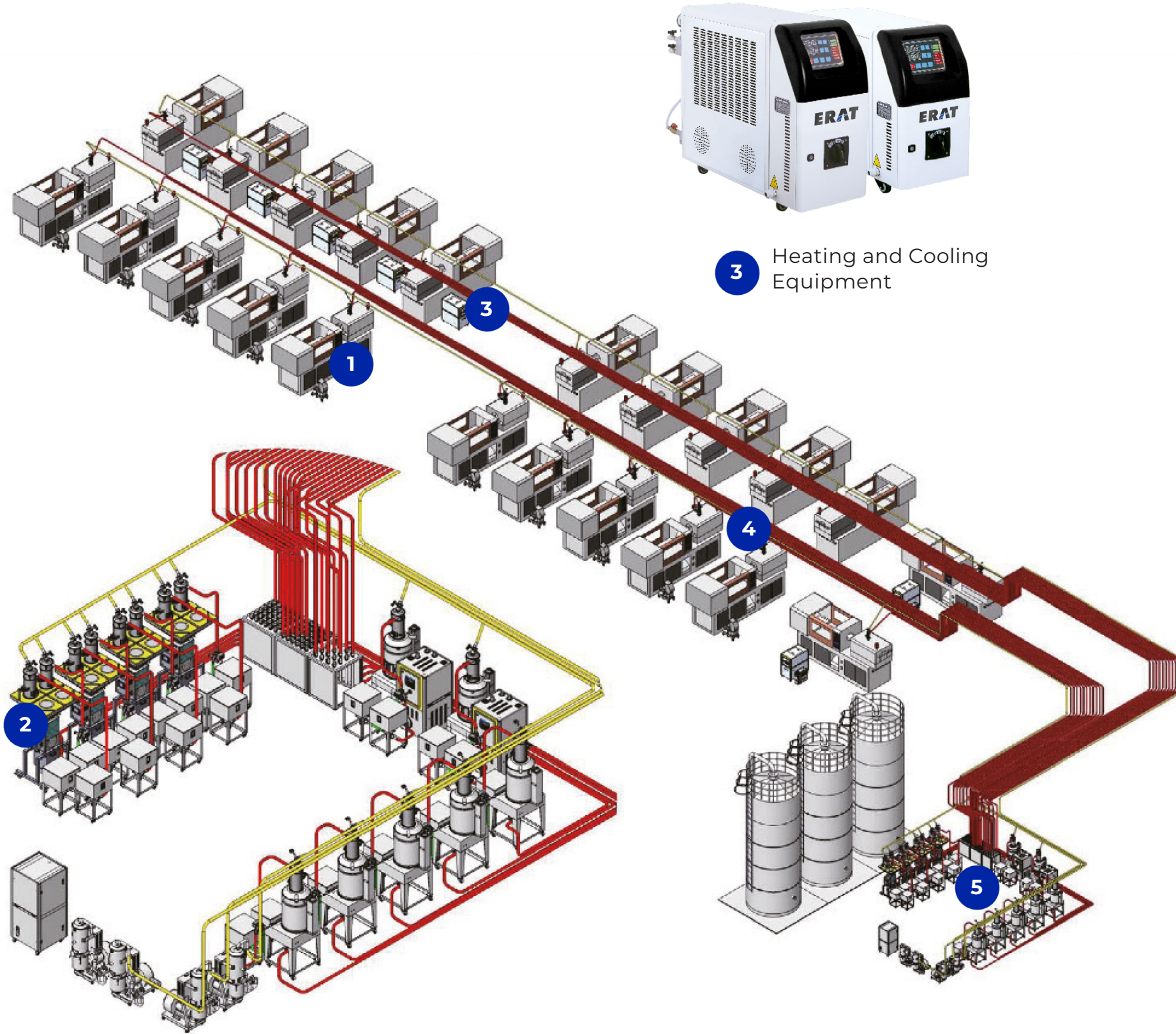




1 Granulator and Recycling Equipment



2 Dosing and Mixing Equipment



3 Heating and Cooling Equipment



4 Feeding and Conveying Equipment



5 Drying and Dehumidifying Equipment

INDEX

07 Feeding and Conveying Equipment

- 08 EE(EEV) Series Single-phase Single Hopper Loaders
- 09 ES(SV) Series Three-phase Single Hopper Loaders
- 10 ESHY Series Single Wire Conveying System
- 12 EC(ECV) Series Central Hopper Loaders
- 14 ESP Series Hopper Loader For Free-Flowing Powders
- 15 ESN Series Hopper Loader for Non-Free-Flowing Powders
- 16 EFV Series Venturi Loaders

17 Drying and Dehumidifying Equipment

- 8 EFHD Series Hopper Dryers
- 20 EHCD Series Honeycomb Dehumidifiers
- 22 EFDL Series 2-in-1 Hot Air Compact Dryers
- 23 EFCD Series 3-IN-1 Compact Dryers
- 24 EFCD-HL Series Heatless Compact Units
- 25 EFDD Series 2-in-1 Compact Dryers
- 26 EFCAD Series Compressed Air Dryer

27 Dosing and Mixing Equipment

- 28 EFVS Series Volumetric Screw Dosers
- 29 EFVS Series Volumetric Screw Dosers
- 30 EFGS Series Gravimetric Screw Dosers
- 31 EFGB Series Gravimetric Blenders
- 32 EFWM Series Gram Per Meter
- 33 EFLC Series Gravimetric Liquid Color
- 34 EFPV Series Proportional Valve

35 Heating and Cooling Equipment

- 36 EFW Series Water Temperature Controllers
- 38 EFO Series Oil Temperature Controllers
- 39 EFCV Series Water or Oil Temperature Controllers
- 40 EFOH Series H.T. Oil Temperature Controllers
- 41 EFWC Series Water-cooled Chillers
- 42 EFAC Series Air-cooled Chillers

43 Granulator and Recycling Equipment

- 44 EFS Screenless Crusher
- 45 EFG 180 Low speed Grusher
- 46 EFG300 Medium Sized Crushers
- 47 EFC300 Sound Proof Crushers

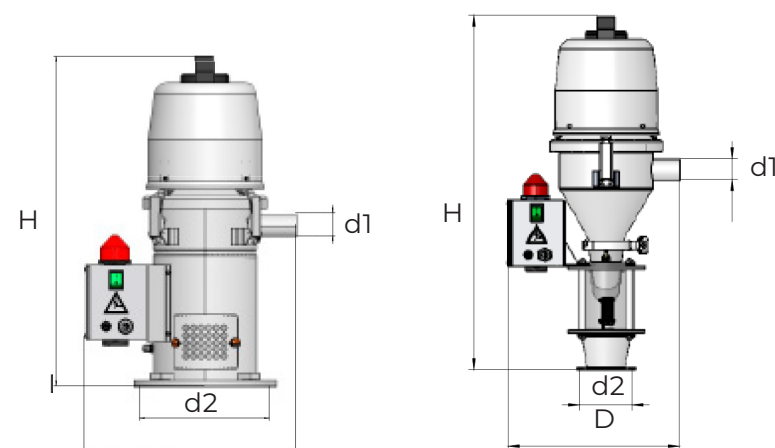
07

Feeding and
Conveying Equipment

EE(EEV) Series / Single-phase Single Hopper Loaders



- Full stainless steel construction.
- Fabric suction filter (with s/s mesh).
- Low noise suction head.
- EE type is fitted with reed switch sensor, EEV type is fitted with Photosensor. Equipped the mechanical flap, no need to adjust.
- All models include the Auto-filter cleaning as standard. It can set the cleaning time and cleaning frequency.
- Motor overload protection, and various alarm indicator.
- Electrical circuit built to comply with CE safety requirements.



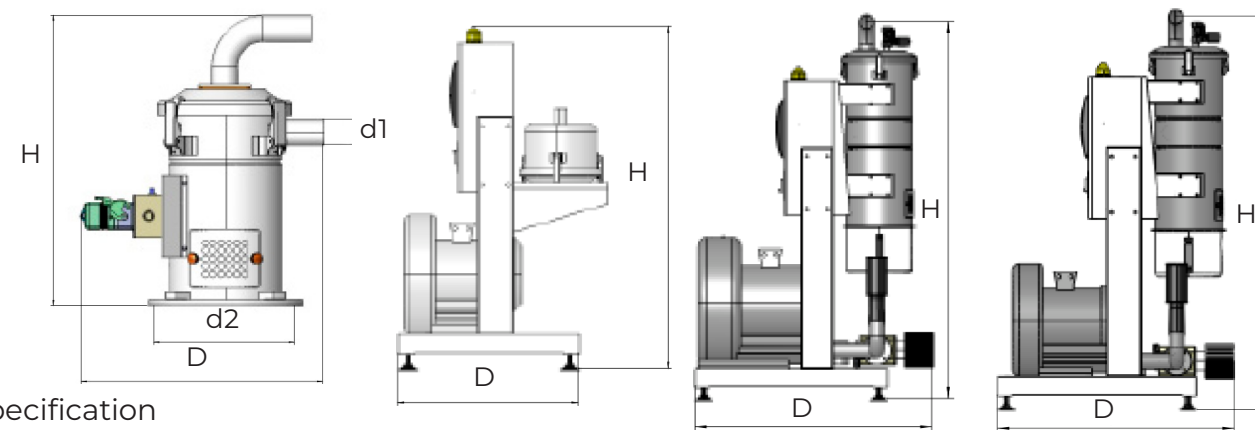
Specification

Model		EE3	EE6	EE12	EEV3	EEV6
Hopper capacity	litre	3	6	12	3	6
Motor power	w	1100				
Throughput	kg /hr	70	140	200	70	140
Probe diameter (d1)	inch	1.5 / 2	1.5 / 2	1.5 / 2	1.5	1.5
Mounting diameter (d2)	mm	235	285	285	110	110
Depth (D)	mm	332	406	413	314	347
Overall height (H)	mm	505	615	761	615	735
Weight approx.	kg	12	13	15	13	14

ES(ESV) Series / Three-phase Single Hopper Loaders



- Full stainless steel construction.
- Fabric suction filter (with s/s mesh).
- ES type is fitted with reed switch sensor, ESV type is fitted with Photosensor. Equipped the mechanical flap, no need to adjust.
- Motor overload protection, and various alarm indicator.
- Cyclone filter as option.
- Electrical circuit built to comply with CE safety requirements.



Specification

Model		ES3	ES6	ES12	ES25	ES50	ESV3	ESV6
Hopper capacity	litre	3	6	12	25	50	3	6
Probe diameter(d1)	inch	1.5	1.5 / 2	1.5 / 2	1.5 / 2	2 / 2.5	1.5	1.5 / 2
Mounting diameter (d2)	mm	235	285	285	360	520	110	110
Depth (D)	mm	364	404	418	520	550	312	347
Overall height (H)	mm	430	550	685	827	850	540	658
Weight approx.	kg	9	10	12	15	18	10	11

Model		EM1	EM2	EM3	EM5	EM5D	EM10	EM10D	EM20D
Blower power	kw	0.75	1.5	2.2	4	5.5	7.5	7.5	15
Throughput	kg	250	400	500	750	1000	1000	1200	1500
Width	mm	480							
Depth (D)	mm	580			680			900	
Height (H)	mm	1100			1330			1750	
Weight approx.	kg	28	38	53	56	105	102	126	145

ESHY Series

Single Wire Conveying System

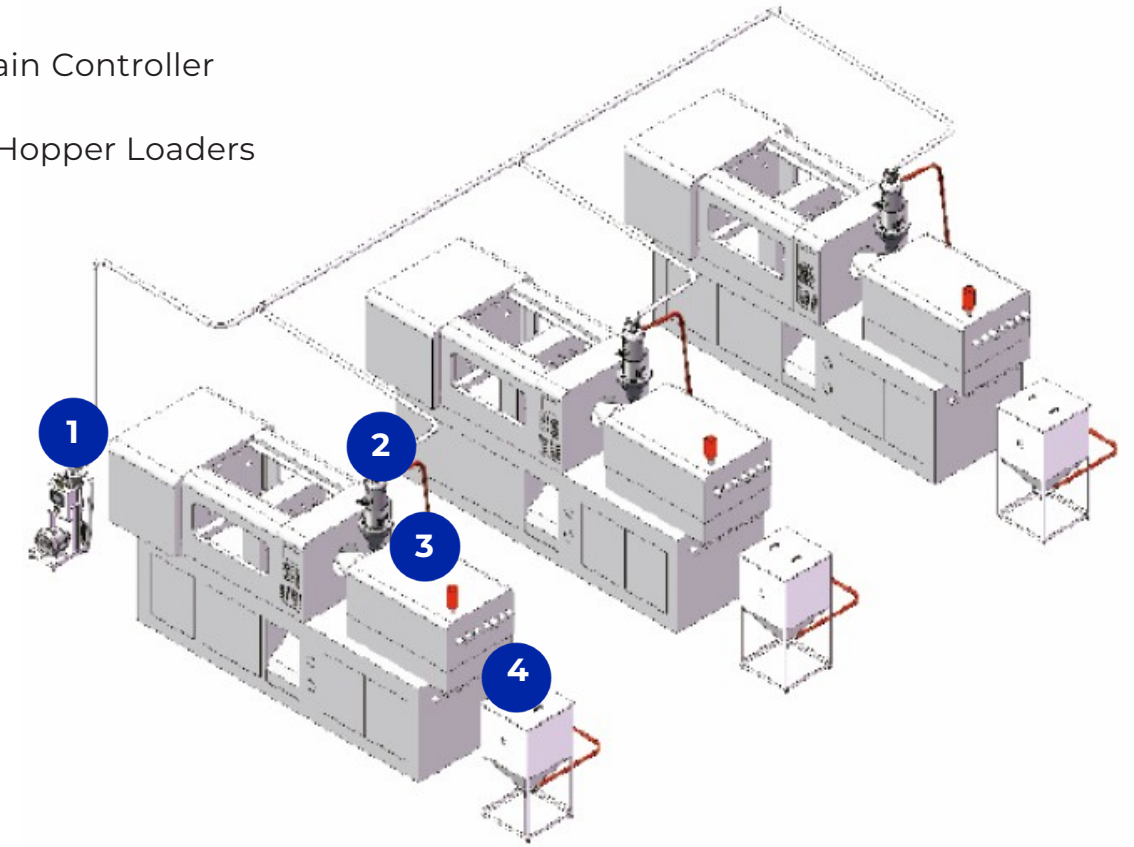


- With up to 12 stations of material conveying, it can greatly lower the cost.
- With lower suction type design and filter with cyclone baffle plate below it mounted in the separating dust collector, it can reduce the load of filter effectively.
- Separating dust collector is convenient for dust cleaning.
- Equipped with faults and motor overload indicators, the main machine can give an alarm immediately.

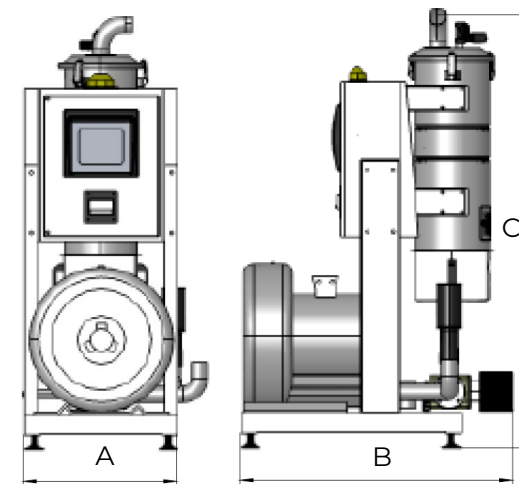
- All main machines are equipped with vacuum valve to protect the blower.
- With central operation panel, it can centrally set parameters of loading material for each station.
- With distributed bus control, it can save cables and is easy to construct as well as to maintain.



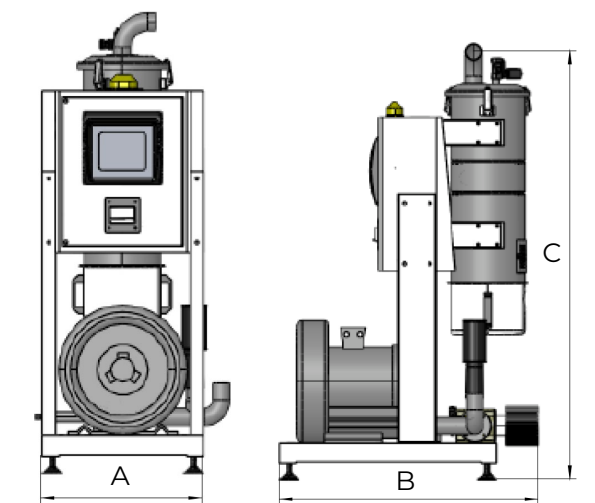
- 1 ESHY Main Controller
- 2 Central Hopper Loaders
- 3 EMIH
- 4 EMST



ESHY-M2~M5



ESHY-M10~M20D



Specification

Model		ESHY-M2	ESHY-M3	ESHY-M5	ESHY-M5D	ESHY-M10	ESHY-M10D	ESHY-M20D
Blower power	kw	1.5	2.2	4	5.5	7.5	7.5	15
Throughput	kg	400	500	750	1000	1000	1200	1500
Width	mm				480			
Depth	mm	580		840			900	
Height	mm	1100			1330			1750
Weight approx.	kg	38	53	56	102	105	126	145
CP3	-	CP3						
CP6	-	CP6						
CP12	-	CP12						

EC(ECV) Series

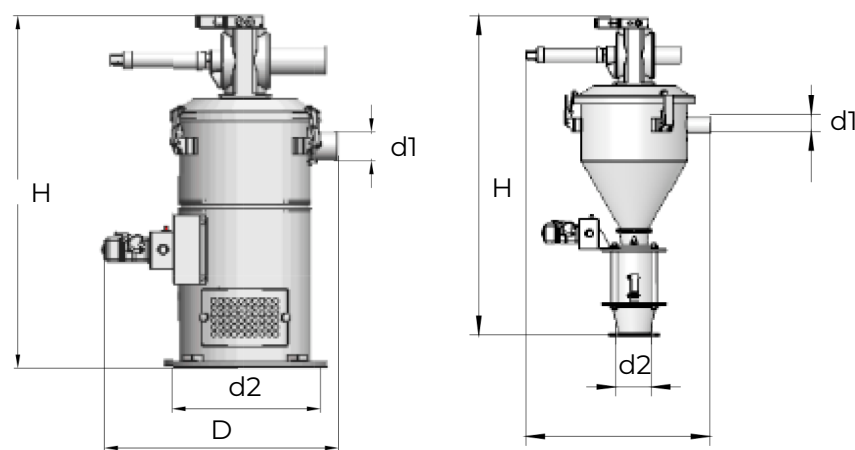
Central Hopper Loaders

Optional Accessories



EC Series Central loaders use a unique cyclone device to collect the dust. This Series are fitted with a reed switch to sense the material level, together with non-return flap valves on both the material inlet and discharge ports.

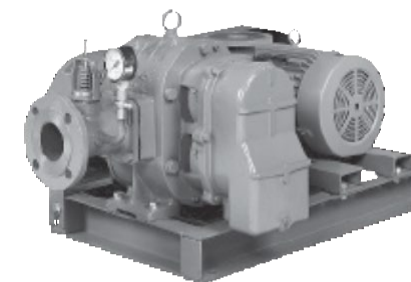
ECV Series is fitted with a photo sensor to sense the material level, together with non-return flap valves on both the material inlet and discharge ports. This series of hopper loader is particularly suitable for mounting directly onto the machine feed throat.



Specification

Model		EC3	EC6	EC12	EC25	EC50	EC75	EC100	ECV3	ECV6
Hopper capacity	litre	3	6	12	25	50	75	100	3	6
Probe diameter (d1)	inch	1.5	1.5 / 2	1.5 / 2	2 / 2.5	2.5 / 3	2.5 / 3	2.5 / 3	1.5	1.5 / 2
Mounting diameter (d2)	mm	235	285	285	360	360	360	360	110	110
Depth (D)	mm	370	409	450	496	558	630	754	304	383
Overall height (H)	mm	523	632	782	980	1145	1182	1120	578	648
Weight approx.	kg	9	14	15	20	30	50	70	9	14

EBS Vacuum Pump



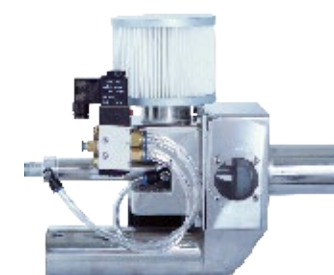
EPV Electronic Pressure Valve



EF Safety Filter Dust Collector



EMCV Material Cleaning Valve



PB Power Control Box



EMPV Mechanical Pressure Valve



ECP Centralized Control Panel

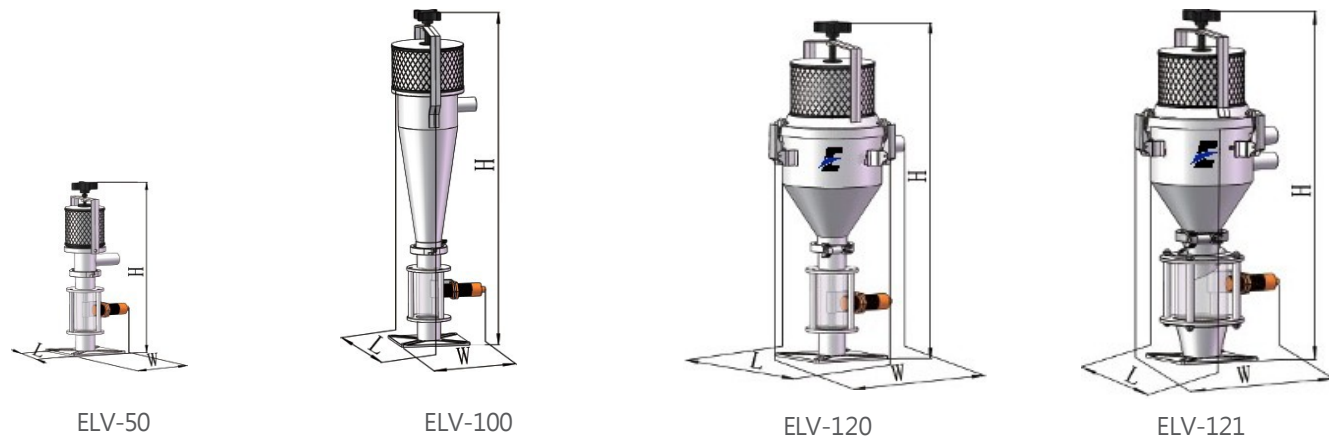


EMIH Material Intermediate Hopper





- European Type appearance, compact in size and light-weighted. Capacitive sensor mounted onto the glass-tube for accurate level sensing
- Filtered air exhaust does not pollute environment.
- Silent operation, it uses high-pressure air to convey materials.
- Quick installation and easy operation with surface polished.
- Hopper and base mount positions are adjustable.
- Easy access to material hopper for convenient cleaning.



Specification

Model		ELV-50	ELV-100	ELV-120	ELV-121
Hopper capacity	Liter	0.5	2.8	3	3
Compressed air	kg / cm ²	4 ~ 6			
Tube Dia.	inch	1.25	1.25	1.25	1.25
Dimensions	mm	185x140x463	186x160x772	197x253x655	197x253x668
Probe diameter (d2)	mm	25			
Mounting diameter (d1)	mm	62			
Weight approx.	kg	4.5	7	7.5	8.5
Throughput	kg/hr	40	60	80	90

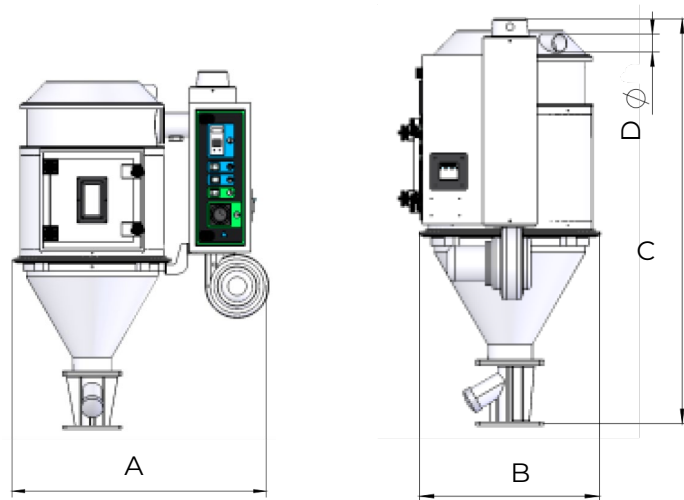
Vertical height 3M, horizontal distance 6M.



EFHD Series Hopper Dryers



- Full stainless steel internal parts.
- Drying under the principle of Hot air down-blowing and Cyclonic air exhausting which ensures consistent drying effects.
- Hopper lid prepared for easy mounting of hopper loader.
- Hopper cleaning door(FHD50 and above).
- All model offer rapid heating and accurate PID temperature controller.
- 7-day timer clock for auto start-up(FHD100 and above).
- Adjustable overheat safety thermostat.
- Main power isolator externally mounted as standard.
- Electrical circuit built to comply with CE safety requirements.

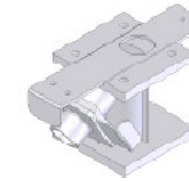


Specification

Model		15	30	50	75	100	150	200	300	400	600
Hopper capacity	litre	25	50	85	115	170	230	335	460	670	1000
Blower motor	W	90	90	200	200	250	250	300	300	400	400
Heating capacity	kw	1.6	2.7	4	5	6	8	10	13	20	20
Drying temp. range	°C	150 (up to 180 as option)									
Voltage, three-phase	V	220~440									
Width (A)	mm	590	665	755	755	835	835	970	970	1221	1321
Depth (B)	mm	420	455	510	510	590	590	710	710	900	1000
Height (C)	mm	635	820	940	1180	1240	1566	1550	1970	1833	2290
Outlet port (D)	inch	1.5	2	2	2	3	3	3	3	4	4
Weight approx.	kg	30	45	60	80	100	140	165	195	230	280

Optional Accessories

EHB Hopper Base



Model	Available Type
EHB-15	EFHD-15
EHB-30	EFHD-30~75
EHB-100	EFHD-100~150
EHB-200	EFHD-200~300

EMR Magnets



Model	Available Type
EMR-15	EFHD-15~30
EMR-50	EFHD-50~150
EMR-200	EFHD-200~300

ENFS N Type Floor Stands



Model	Available Type
ENFS-15	EFHD-15~30
ENFS-50	EFHD-50~75
ENFS-100	EFHD-100~150
ENFS-200	EFHD-200~300

ESB Suction Box



Model	Available Type
ESB-1P-40	EFHD-15~75
ESB-1P-50	EFHD-100~300

EMB Magnetic Base



Model	Available Type
EMB-15	EFHD-15~30
EMB-50	EFHD-50~150
EMB-200	EFHD-200~300

ESGV Slide Gate Valve



Model	Available Type
ESGV-15	EFHD-15~30
ESGV-50	EFHD-50~150
ESGV-200	EFHD-200~300

EPFS Platform Stands



Model	Available Type
EPFS-50	EFHD-50~75
EPFS-100	EFHD-100~150
EPFS-200	EFHD-200~300

ESB-MS Material Shut Off Box



Model	Available Type
ESB-IP-40-MS	EFHD-15~75
ESB-IP-50-MS	EFHD-100~300

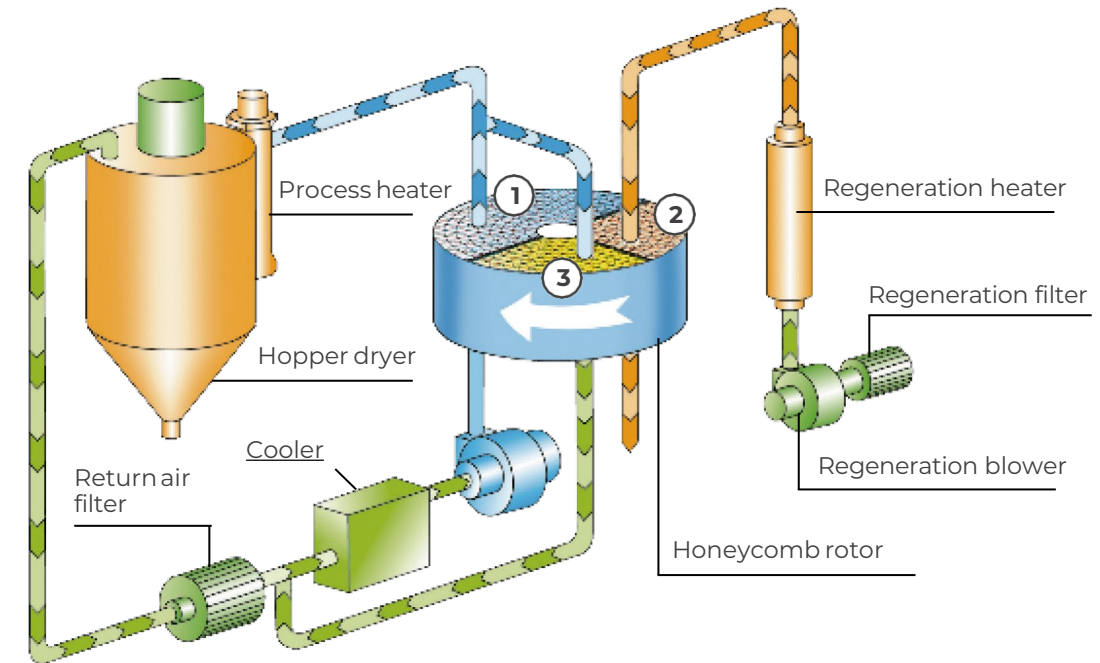
EHCD Series Honeycomb Dehumidifiers



EHCD Series of Honeycomb Dehumidifiers have been designed built using the "Rotor Honeycomb" principle, and operate in a closed loop system with the dew-point of -40 °C. The Honeycomb rotor is divided into a process and regeneration zones by the casing structure and heat resistance air sealing. The rotor is constantly and very slowly rotated at an optimum rotation speed for the condition by a gear motor. High moisture air is drawn into the honeycomb matrix of the rotor through the return air filter by the process blower. When the air is passing

through the honeycomb matrix, moisture in the air is absorbed and dried air is discharged from the process outlet by the process blower. The rotor absorbed moisture is rotated into the dehumidifying zone before it is saturated. At the same time, the cooling air is drawn from the counter side through the regeneration filter and is heated and enters the regeneration zone of the rotor and disturbs the moisture absorbed in the rotor and then is exhausted to the outside by a regeneration blower. This cycle of operation is continuously conducted.

The Dehumidifying Principle



- ① Dehumidifying zone
- ② Regeneration zone
- ③ Cooling zone

Specification

Model	EHCD	50	100	180	300	400	700	1000
Dewpoint	°C	-40						
Air flow	CMH	50	100	180	300	400	700	1000
Processing blower	kw	0.55	0.75	1.9	2.6	3.7	7.5	11.3
Regen. blower	kw	0.25	0.55		0.75		2.25	3.75
Regen. heater	kw	2.5	4	5	6	8.5	15	22
Processing way		Honeycomb rotor						
Rotor motor	kw	0.015			0.025			
System control		PID auto tuning microprocessor						
Processing outlet	inch	2	2.5		3		6.5	
Regen. outlet	inch	1.5	2.5	2.5	3	3	3.5	3.5
Cooling water flow	gpm	1.5	3	6	9	12	21	30
Water connect	inch	1/2	3/4		3/4		1 1/4	
Power supply	V	AC220~440V, 3P, 60HZ						
Control volt.	V	AC220V, 1P						
Total power	kw	3.4	3.4	7.5	9.4	13	24.8	37.1
Dimension (mm)	W	650	765		900		1250	1250
	L	745	910		1045		1400	1550
	H	1280	1630		1930		2085	2085
Weight approx.	kg	150	200	250	300	320	400	420

Drying Capacities kg/hr

Material	Drying Temp (°C)	Drying Time (hr)	Moisture Content (%)	Drying Capacity / EHCD Model										
				50	100	180	300	400	700	1000	1300	1600	1900	2300
ABS	80	3~4	0.4	30	60	100	165	220	390	560	730	895	1060	1260
POM	100	2	0.3	30	60	105	180	240	420	600	780	960	1140	1375
PMMA	80	2~3	0.4	30	60	105	175	230	405	580	755	930	1100	1330
LONOMER	90	4~5	≤1	20	40	75	120	160	285	405	525	645	765	925
PA6	75	4~6	≤1	25	50	90	150	200	345	490	640	785	935	1130
PA6.6	75	4~6	≤1	25	50	90	150	200	345	490	640	785	935	1130
PA6.10	75	4~6	≤1	25	50	90	150	200	345	490	640	785	935	1130
PC	120	3~4	0.3	25	45	75	130	170	295	420	550	675	800	800
PU	90	2~3		25	45	75	130	170	295	420	550	675	800	800
PBT	130	3~4	0.25	20	35	60	100	135	235	335	435	535	635	770
PE	90	1		20	40	75	120	160	285	405	525	645	765	925
PET	160	4~6	0.4	20	35	60	100	135	235	335	435	535	635	770
PETG	70	3~4		25	45	80	35	180	310	445	575	710	840	1050
PPO	110	2	0.1	25	45	80	135	180	310	445	575	710	840	1050
PP	90	1		25	45	80	135	180	310	445	575	710	840	1050
PS (GP)	80	1	0.1	30	60	105	180	240	420	600	780	960	1140	1375
PSU	120	3~4	0.2	25	45	80	135	180	310	445	575	710	840	1015
PVC	70	1	0.4	40	75	135	225	295	515	740	960	1180	1400	1695
SAM (AS)	80	2	0.1	30	60	105	180	240	420	600	780	960	1140	1375

EFDL Series 2-in-1 Hot Air Compact Dryers



- Closed-loop conveying device eliminates the possibility of moisture regain during material conveying.
- Hot air recycler equipped as standard, featuring energy saving, no exhaust of hot air and dust, and environmental protection.
- Shut-off suction box equipped as standard ensures no material remains in the material line after each loading cycle.
- Double-wall drying hopper features hot air down-blowing and cyclonic exhaust design, it maintains a steady temperature and increase drying efficiency.

Specification

Model	EFDL	30	50	75	100	150
Hopper dryer (double-wall)	litre	50	85	115	170	230
Process blower	W	90	200	200	250	250
Heater	kw	2.7	4	5	6	8
Drying temp.	°C	150				
System control		PID auto tuning microprocessor				
System power	V	AC 220~440V, 3P, 60HZ				
Control power	V	AC220V, 1P				
Compressed air pressure	bar	4~6				
PVC hose	inch	1.5				
Conveying blower	kw	0.75 (2HP above as option.)				
Loader control		Max. 3 sat. (Max. 2 sat. on molding machines, 1 sta. on dryer)				
Loader type (on machine)&capacity	L	Photo sensor / 3			Photo sensor / 6	
Loader type (on dryer)&capacity	L	Reed Switch / 3			Reed Switch / 6	
Suction bBox		Shut-off suction box and closed-loop drying air				
Total power	kw	3.54	4.95	5.95	7	9
Dimension (mm)	W	750	750	890	890	900
	L	800	800	985	985	1330
	H	1550	1760	1700	1930	2200
Weight	kg	175	190	240	270	330

EFCD Series 3-IN-1 Compact Dryers



- EFCD compact dryer offers more feature as standard equipment with a smaller footprint than comparable systems, giving maximum performance in minimal space.
- Standard Dew-point -40°C ; Dew point -50°C as an option model.
- Standard PID temperature control to save the energy costs.
- Use the Honeycomb rotor design without the desiccant tower switching actions to avoid the problem of the instable Dew-points.
- The Honeycomb rotor has service life at least 6 years, it can be cleaned as soon as poor drying efficiency is found.
- Automatic Dehumidifying system and Regeneration circling system.
- Closed loop circuit design eliminates the risk of moisture re-absorption and suitable for polymer drying applications involving particularly large quantities hygroscopic material.
- The Multiple safety protection device.

Specification

Model	EFCD	530	550	575	10100	10150	18200	18300
Drying hopper	kg	30	50	75	100	150	200	300
Dewpoint	°C	-40						
Air flow	cmh	50			100		180	
Drying temperature	°C	150 (180°C High temp. type as option)						
Processing blower	kw	0.55			0.75		1.5	
Regen. blower	kw	0.25			0.55			
Processing heater	kw	2.7	4	5	6	8	10	13
Regen. heater	kw	2.5			4		5	
Processing way		Honeycomb rotor						
Rotor motor	kw	0.015						
System control		PID auto tuning microprocessor						
Processing outlet	inch	2			2.5			
Regen. outlet	inch	1.5			2.5			
Cooling water flow	gpm	1.5			3		6	
Water connect	inch	1 / 2			3 / 4			
Power supply	V	AC220~440V, 3P, 60HZ						
Control volt	V	AC220V, 1P						
Compressed air	bar	4~6						
Conveying blower	kw	0.75 (2HP above as option.)					1.5	
Total power	kw	6.8	8.2	9.2	12.2	14.2	18.95	21.95
Dimension (mm)	W	840	840	920	920	1215	1560	1560
	L	980	980	1270	1270	890	917	917
	H	1550	1760	1700	1930	2146	2045	2300
Weight	kg	210	230	250	335	375	450	475

EFCD-HL Series

Heatless Compact Units



- Closed-loop conveying device eliminates the possibility of moisture regain during material conveying.
- Hot air recycler equipped as standard, featuring energy saving, no exhaust of hot air and dust, and environmental protection.
- Shut-off suction box equipped as standard ensures no material remains in the material line after each loading cycle.
- Double-wall drying hopper features hot air down-blowing and cyclonic exhaust design, it maintains a steady temperature and increase drying efficiency.
- Heatless regenerative device can supply dry air with relative low dewpoint to speed up material handling process.

EFDD Series

2-IN-1 Compact Dryers



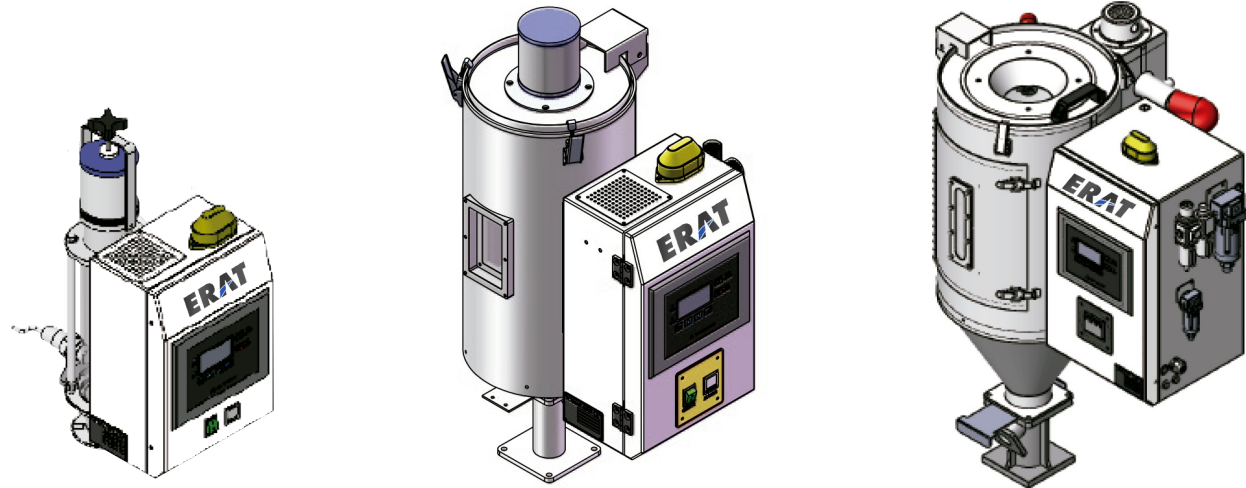
- The EFDD Compact Dryer use Honeycomb dehumidifier and Drying hopper with compact stand.
- Each model combines dehumidifying and drying functions into a single unit.
- Insulated drying hopper features dry air down-blowing and cyclone exhaust design. This improve drying efficiency and reduces energy consumption while maintain a steady drying effect.
- Compact in size for ease of movement and space saving.
- Material processing is controlled via microprocessor as standard, more convenient control and auto operation.
- Dewpoint monitor can be filled by option to check dry air dewpoint.
- Optional suction box and hopper loader for added convenience when conveying material.

Specification

		50	85	115	170	230	335
Hopper dryer(double-wall)	litre	50	85	115	170	230	335
Process blower	W	90	200	200	250	250	300
Heater	kw	2.7	4	5	6	8	10
Drying temp	°C	150					
System control		PID Auto tuning microprocessor					
System power	V	AC220~440V, 3P 60HZ					
Control power	V	AC220V, 1P					
Compressed air volume (for HL model only)	l/min	50			100		
Compressed air pressure	bar	4~6					
PVC hose	inch	1.5					
Conveying blower	kw	0.75 (2HP above as option.)					
Loader control		Max. 3 Sat. (Max. 2 sat. on molding machines, 1 sta. on dryer)					
Loader type (on machine) & capacity	L	Photo sensor / 3			Photo sensor / 6		
Loader type (on dryer) & capacity	L	Reed switch / 3			Reed switch / 6		
Suction box		Shut-off suction box and closed-loop drying air					
Total power	kw	3.54	4.95	5.95	7	9	11.05
Weight	kg	220	240	300	340	420	470

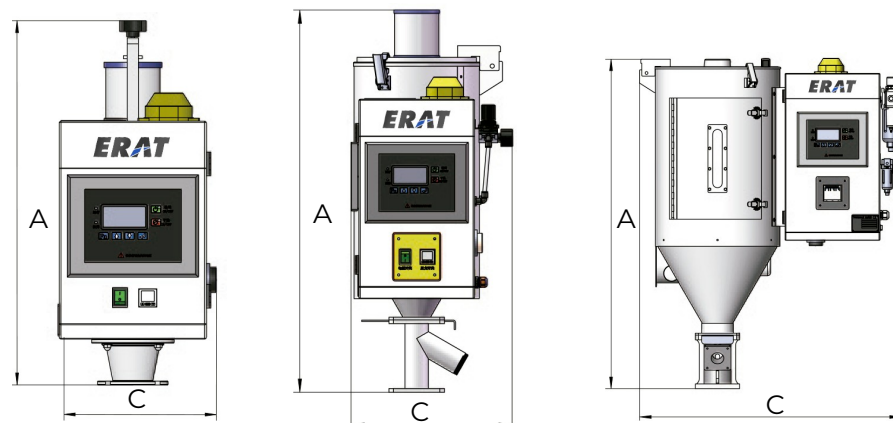
Specification

Model	EFDD	550	575	10100	10150	18200	18300	30400	30500	30600	40600	40800	
Drying hopper	kg	50	75	100	150	200	300	400	500	600	600	800	
Dewpoint	°C	-40											
Air flow	CMH	50		100		180		300		400			
Drying temperature	°C	150 (180°C High temp. type as option)											
Processing blower	kw	0.55		0.75		1.9		3		5.5			
Regen. blower	kw	0.25		0.55				0.75					
Processing heater	kw	4	5	6	8	10	13	20		24			
Regen. heater	kw	2.5		4		5		6		8.5			
Processing way		Honeycomb rotor											
Rotor motor	kw	0.015					0.025						
System control		PID Auto tuning microprocessor											
Processing outlet	inch	2		2.5		3							
Regen. outlet	inch	1.5		2.5		6							
Cooling water flow	gpm	1.6		3		6		9		12			
Water connect	inch	1/2		3/4									
Power supply	V	AC220~440V, 3P 60HZ											
Control volt.	V	AC220V, 1P											
Compressed air	bar	4~6											
Total power	kw	8.2	9.2	11.8	13.8	17.6	20.9	30.2	30.2	30.2	35.5	39.5	
Dimension (mm)	W	1200	1200	1415	1415	1415	1415	1900	1900	1900	1900	1900	
	L	778	778	898	898	1005	1005	1200	1200	1307	1307	1307	
	H	1471	1696	1819	2144	2141	2396	2418	2768	2723	2723	3273	
Weight	kg	250	270	360	400	475	505	620	655	670	690	726	



P.I.D. temperature controller can reach the accuracy of $\pm 1^{\circ}\text{C}$, Equipped with overheat protection to avoid excessively high drying temperature.
 Equipped with air outlet filter, which is used to filter dried air exhausted to outside.
 Warning light can monitor machine operation.
 Adopts compressed air to dry plastic materials

with good and stable drying effect, and is not influenced by ambient temperature and humidity.
 Function of compressed air pressure detection makes a safe and reliable operation.
 Voltage-output type temperature controller collocating with SSR control loop can effectively prolong the lifespan of device.



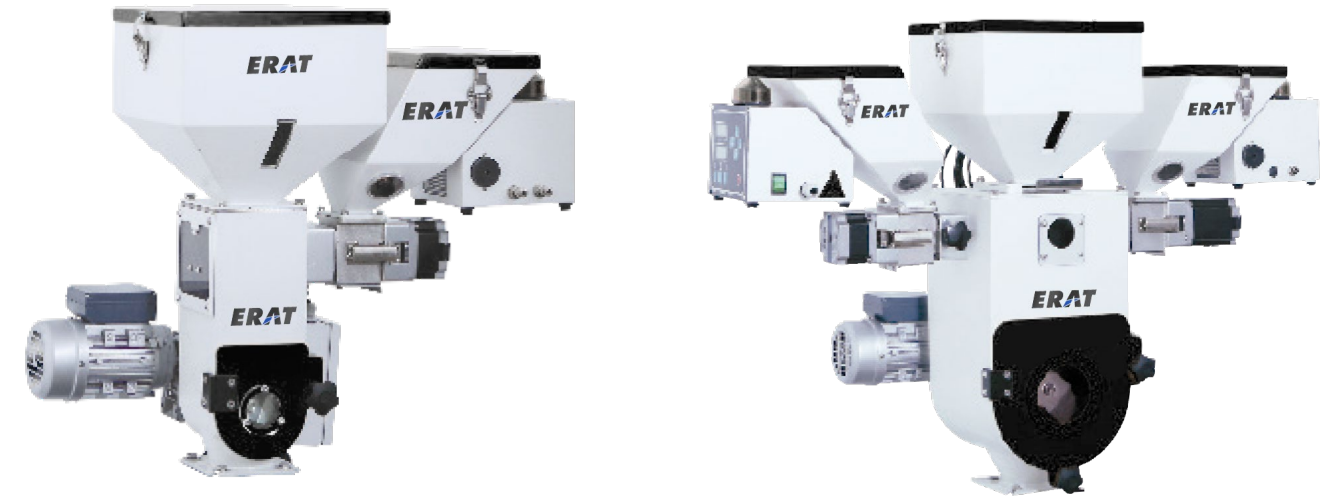
Specification

Model		EFCAD-1	EFCAD-4	EFCAD-8	EFCAD-15HL	EFCAD-30HL	EFCAD-50HL
Drying temperature	$^{\circ}\text{C}$	38-176 $^{\circ}\text{C}$					
Dewpoint	$^{\circ}\text{C}$	-18 $^{\circ}\text{C}$		-40 $^{\circ}\text{C}$			
Airflow standard cubic	L	1.5	8	16	30	60	85
Heating capacity	kw	0.5					2
hopper inlet pipe size	inch	3 / 8					
Dimension							
Hight (A)	mm	495	700	740	800	1207	
Width (B)	mm	345	555	615	710	710	
Length (C)	mm	360	435	435	500	500	
Weight	kg	12	20	25	30	35	35
Voltage-total amps	A	2.3	4.5	4.5	4.5	4.5	4.5
ERAT recommends purchasing the optional membrane when: Your process requires that you obtain a dewpoint of -40 $^{\circ}\text{C}$, or the compressed air dewpoint you are supplying is above 4 $^{\circ}\text{C}$ dewpoint yor are supling is above 4 $^{\circ}\text{C}$.							

SPECIFICATIO
 N NOTES
 5 bar, clean dry
 compressed air
 pressure
 dewpoint of 5 $^{\circ}\text{C}$;
 residual oil
 content of less
 than 3mg/ m³

27

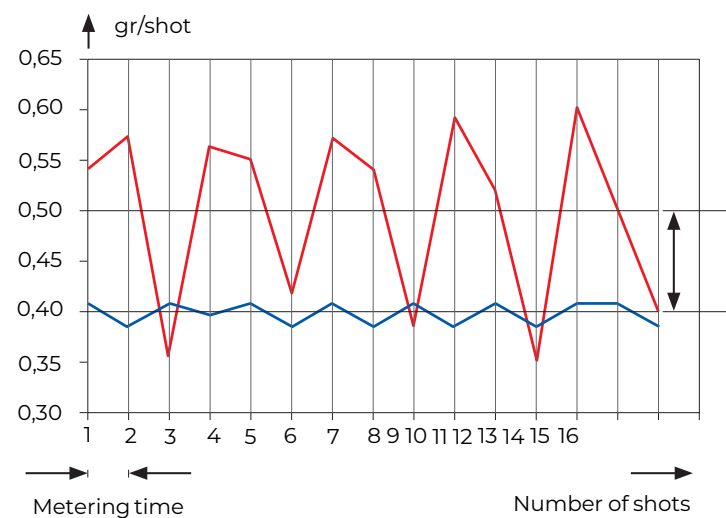
Dosing and
 Mixing Equipment



The metering is a superior concept thanks to the combination of our proprietary invention the special dosing screw, the use of a stepper motor and the uniquely designed electronic controls. With this winning combination, you will achieve :

- An even dosing rate as the peaks and drops associated with screw dosing units are eliminated (see graphics below)
- Accurate and stable dosing as the stepper motor guarantees a perfect constant speed.
- An incredible high capacity range of 0.05 to 180 kg/hr.

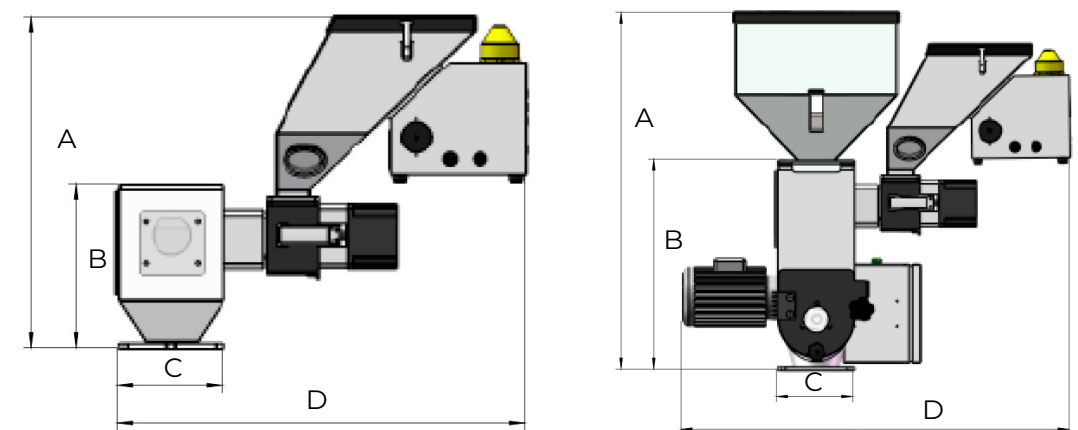
- Optimum capacity control under all circumstances thanks to our advanced control algorithm.
- Auto synchronization to extruder speed.
- Integrated hopper loader control
- Warning and Alarm out
- Recipes function
- Easy cleaning and disassembly of dosing and mixing unit



Average of screw dosing unit
This is your additional profit
Average of the ERAT dosing unit

Technical Features	
Control	Microprocessor with digital display
Input signal	Potential free contacts / 24 VDC contacts / Tacho input voltage
Motor	Accurate stepping motor (brush less)
Injection molding	Jog mode and continue mode
Extrusion	Jog and synchronic mode
Hopper	Stainless steel 6 liter
Volt / frequency	110 / 220 Volt 50-60Hz

Specification							
Screw / Sleeves	A3	A10	A15	A20	A30	A20HT	A30HT
g / s	0.05~0.6	0.2~1.8	0.3~4.5	0.4~7.5	1~14	0.4~7.5	1~14



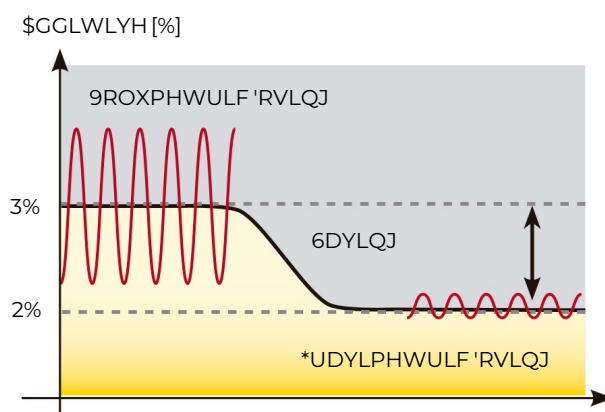
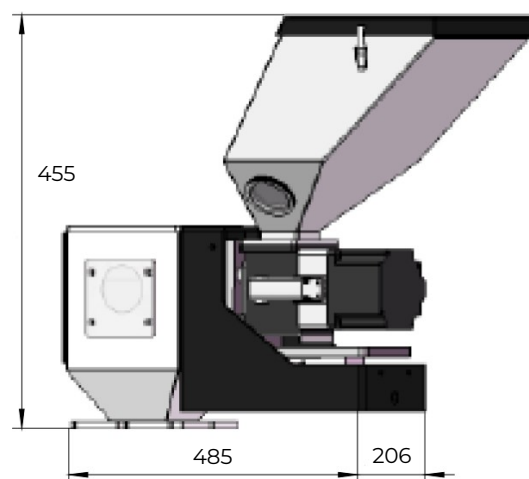
Model	A(mm)	B(mm)	C(mm)	D(mm)	E(mm)
EFVS	445	219	140	549	212
EMIX-3	657	788	140	719	416
EMIX-15	385	513	260	772	443

EFGS Series

Gravimetric Screw Dosers



- Stores up to 999 recipes, shortened setup time
- Easy maintenance and cleaning when switching colors and materials
- Extreme accuracy and repeatability allows precise dosing and prevents overdosing of materials
- Loss-in-weight controlling function allows optimum adjustment of operating point
- Improved final product quality, reduced number of rejects.
- Suited to any injection molding, extrusion and blow molding machines



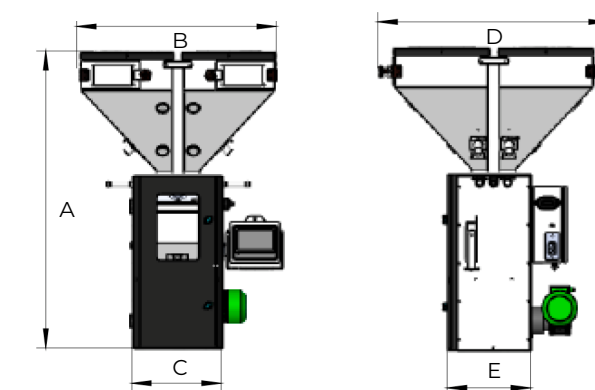
Technical Features	
Hopper	6/ 12 Liter
Output range	0.05-14 g / s
Motor	Accurate stepping motor (brush less)
Controller	Microprocess or with digital display
Load cell	15 kg max.
Loader	Automatic integral venturi vacuum loader
Weight	16kg
Volt / frequency	100-240v, 200w, 50 / 60hz

EFGB Series

Gravimetric Blenders



- Compact, space saving and modular design.
- Simple setting of required percentages and ratios.
- Accurate and repeatable process.
- While blending the next batch is weighted.
- Self calibration. During the dosing cycle the control automatically corrects differences from the preset values.
- Easy installation on, or next to the processing machine.
- More flexibility because of different types of control.
- Suited as central-blender for several machines.
- Hopper loaders of your own choice.
- Gravimetric / volumetric mode to increase throughput.
- Easy cleaning of weigh pan and mixing chamber.
- Security password levels.
- More languages on the display.
- Accuracy 1/1000.



Specification

Model		EFGB-G1	EFGB-G2	EFGB-G5	EFGB-G10	EFGB-G25
Dimension A	mm	805	1180	1261	1674	2150
Dimension B	mm	697	843	972	1370	1663
Dimension C	mm	250	379	375	500	650
Dimension D	mm	644	892	892	1342	1864
Dimension E	mm	250	348	275	460	650
Weight approx.	kg	60	75	85	160	185

Model		EFGB-G1	EFGB-G2	EFGB-G5	EFGB-G10	EFGB-G25
Number of component		2~4	2~6	2~6	2~7	2~10
Kg/hr max.	kg / hr	45~60	210~260	670~840	1100~1860	2060~2980

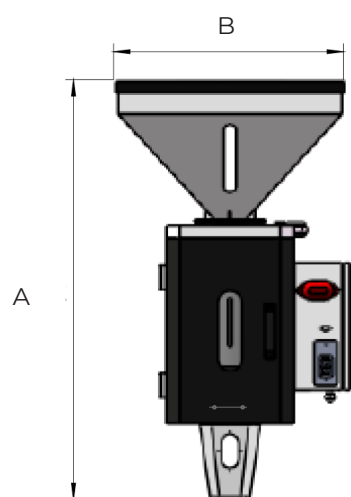
EFGM Series

Gram Per Meter



- Pipe-/Tube Extrusion
- Cable Extrusion
- Profile Extrusion
- Film Extrusion
- Reliable realisation of product recipes
- Constant weight per metre, +/-0,5%
- Constant product quality, independent of bulk

- density variations
- Reduced material use due to lower set values, savings of approx. 10%
- Shortened set-up times due to precise and constant recording of production data (mass throughput, weight per metre) as well as an increased efficiency



Model	EFWM350		EFWM500	
Voltage	V	220V	220V	
Output	Kg / hr	350 kg / hr	500 kg / hr	
Power	kw	28.8 kw	28.8 kw	
Dimension (L x W x H)	mm	574 x 574 x 952	574 x 574 x 1165	
Description	Extruding metering controller	1PS	Extruding metering controller	1PS
	Fuji man-machine	1PS	Fuji man-machine	1PS
	7 inch TFI64K.800		10 inch TFI64K.800	
	Load cell	1PS	Load cell	1PS
	Multi-functional Load-cell based Electric meter Based electric	1PS	Multi-functional Load-cell based Electric meter	1PS
	Courter encoder	1PS	Courter encoder	1PS
	Hopper	1PS	Hopper	1PS

EFLC Series

Gravimetric Liquid Color



MIDEXX™ Gravimetric Dosing Platform is a loss in weight system which utilizes a very accurate scale system; it requires no calibration and compensates for fluctuations in material density and wear on equipment and tubing.

Shot size and LDR are the only inputs required to start dispensing. The pump will self-calibrate continuously. MID's revolutionary design of the container holder enables fast color changes and little waste of colorant. The optional quick disconnect tubing makes the changing of the colorant easy with no mess.

Fastest and easiest color change cycle times, maximum continuous throughputs, and highest processing stability. Bundled in clean, solid, and cost-effective systems. This is how the innovative Dosing and Dispensing solutions from Micro Interface Design secure your productivity.

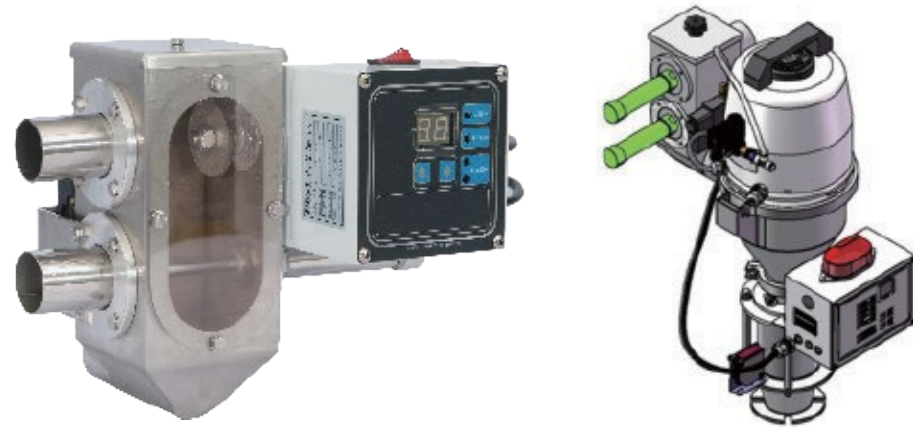
Precise flow rates ensuring feasibility for pumping a wide spectrum of Colorants and Additives for plastics industry that can range

from small-flow Injection applications all the way to high capacity Extrusion lines. Global, Reliable, and dedicated to Partnership. You can always rely on Micro Interface Design

Technical Features

- Peristaltic, Progressive Cavity Drive
- Volumetric and Gravimetric modes
- Stepper Motor Drive for precise metering
- Injection and Extrusion modes
- Automatic adjustment to injection cycle recovery time variations
- Automatic or manual calibration
- Automatic storage of settings during power down
- Electrical power input of 100-220 VAC, 50/60 Hz
- Unit Weight = 10Kg
- Two year warranty
- USB connection
- Wi-Fi connectivity (optional) with remote
- Monitoring and Control software

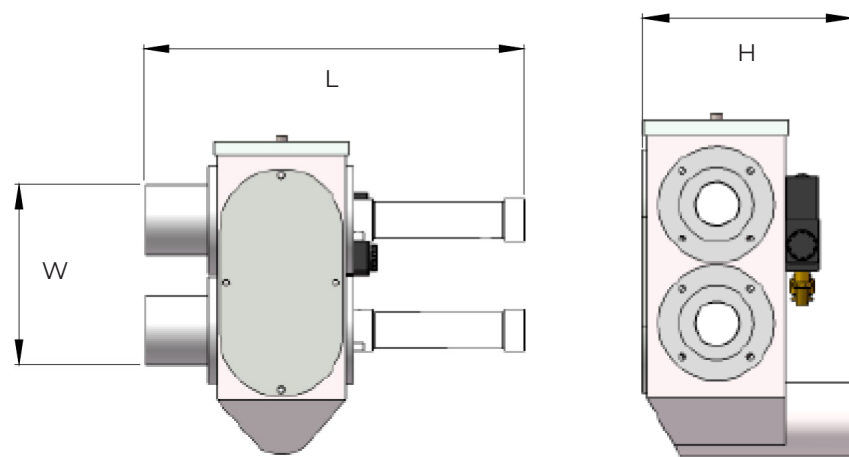




European type design, classy appearance, easy installation and operation.

- Unique design of valve body, make material conveying more smooth.
- The performance of solenoid valve is so stable that the air cylinder acts accurately to ensure a proportional mixing of new and regrind materials.

- Instant recycling of regrind materials to reduce production cost.
- Control box is optionally available when performing in other situations. Equipped with 1~4 levels working function selection, making material mixing more evenly.



Model		EFPV-40	EFPV-50	EFPV-65	EFPV-75
Pipe size	inch	1.5	2	2.5	3
Voltage	v	220			
Capacity	kg / hr	380	550	700	850
Dimension	L x W x H mm	251 x 232 x 142		318 x 243 x 106	380 x 352 x 167

EFMC Series Water Temperature Controllers



- Self-optimizing microprocessor controller with digital display of set and actual temperature.
- The module design is compact, economical, efficient and basically maintenance free.
- Automatic water drain when change the mould as option function.
- Complete with safety protection and error indication system.
- Rapid heating and cool off speeds, temperature is kept stable at all time.
- Electrical circuit built to comply with CE safety equipment as option.
- Use German speck pump.

- Self-optimizing microprocessor controller with digital display of set and actual temperature.
- The module design is compact, economical, efficient and basically maintenance free.
- Automatic water drain when change the mould as option function.
- Complete with safety protection and error indication system.
- Rapid heating and cool off speeds, temperature is kept stable at all time.
- Electrical circuit built to comply with CE safety equipment as option.
- Use German speck pump.

Specification

Model	EFMC-605W	EFMC-910W	EFMC-1220W	EFMC-2430W	
Power supply	V	AC220~440V, 3P 60HZ			
Temperature range	°C	50~120 °C			
Media		Water			
Heater	kw	6	9	12	24
Tank capacity	Ltr	W / O tank			
Cooling way		Direct cooling			
Cooling capacity	kcal / hr	9000	12000	18000	24000
Temperature control	°C	PID (±0.5)			
Pump	type	Gear Pump (Mechanical Seal)		Vortex Pump	
	power (kw)	0.75	1.5	2.2	3.7
	max. pressure 60HZ (kg / cm ²)	5.2	6.5	2.6	3.8
	output 60HZ (ltr / min)	45	80	315	367
Total power	kw	6.75	10.5	20.2	30.7
Min. water pressure	kg / cm ²	2			
Cooling water pipe	inch / set	1/2"PT			
Media pipe	inch / set	3 / 8"PT-4in-outlet (1HP above is optional)		3 / 8"PT-4in-outlet	
Dimension(LxWxH)	mm	760x300x600	840x300x840	990x300x840	1000x400x900
Weight	kg	50	55	75	110
Option		L:Lux (Auto Drain) 2 · Filter 3 · 3 / 8"PT-4in-outlet (1HP above is optional)			

Specification

Model	EFMC-9WP	EFMC-12WP	EFMC-6WP	EFMC-9WP	
Power supply	V	AC220~440V, 3P 60HZ			
Temperature range	°C	50~140 °C	50~160 °C	50~180 °C	
Media		Water			
Heater	kw	9	12	6	12
Tank capacity	ltr	W / O tank			
Cooling way		Indirect cooling			
Cooling capacity	kcal / hr	9000	15000		
Temperature control	°C	PID (±0.5)			
Pump	type	YS Magnetic Pump		YS Gear Pump	
	power (kw)	0.75	1.5	1.1	
	max. pressure 60HZ (Kg / cm ²)	5.2	3.1	6	5.7
	max. output 60HZ (ltr / min)	45	80	60	
Total power	kw	6.8	10.55	10.15	
Media pipe	kg / cm ²	3 / 8"PT- 4 inlet / outlet			
Dimension (LxWxH)	mm	840 x 300 x 840			
Weight	kg	75	80		
Option		1 · L:Lux (Auto Drain) 2 · Filter 3 · 3 / 8"PT-4in-outlet (1HP above is optional)			

EFMC Series Oil Temperature Controllers



- Self-optimizing microprocessor controller with digital display of set and actual temperature.
- The module design is compact, economical, efficient and basically maintenance free.
- Automatic oil drain when change the mould as option function.
- Complete with safety protection and error indication system.
- Rapid heating and cool off speeds, temperature is kept stable at all time.
- Electrical circuit built to comply with CE safety equipment as option.
- Use German speck pump

Specification

Model		EFMC-6H	EFMC-9H	EFMC-12H	EFMC-24H	EFMC-36H	EFMC-6H	EFMC-9H
Power supply	V	AC220~440V, 3P 60HZ						
Temperature range	°C	50~200°C						
Media		Thermal oil						
Heater	kw	6	9	12	24	36	6	9
Tank capacity	ltr	8			10	12	8	
Cooling way		Indirect cooling						
Cooling capacity	kcal / hr	7200	9000	12000	25000	35000	9000	12000
Temperature control	°C	PID (±0.5)						
Pump	type	Gear pump (mechanical seal)			Vortex pum		Magnetic drive pump (sealless)	
	power (kw)	0.5	0.75	1.5	2.2	3.7	0.5	1.1
	max. pressure 50 / 60HZ (kg / cm ²)	4	5.2	6.5	2.6	3.8	5	6
	max. output 50 / 60HZ (ltr / min)	27	45	80	315	367	40	60
Total power	kw	6.5	9.75	10.5	26.2	39.7	6.5	10.1
Min. water pressure	kg / cm ²	2						
Cooling water pipe	inch / set	1 / 2"PT						
Media pipe	inch / set	3 / 8"PT-2 in-outlet	3 / 8"PT-4 in-outlet		3 / 8"PT-4 in-outlet	3 / 8"PT-2 in-outlet		3 / 8"PT-4 in-outlet
Dimension (LxWxH)	mm	760x300x600	840x300x840		990x300x840	1000x400x900	840x300x840	
Weight	kg	50	55	65	80	115	60	65
Option		1 · L:Lux (Auto Drain) 2 · 3 / 8"PT-4in-outlet (1HP above is optional)						

EFCV Series Water or Oil Temperature Controllers



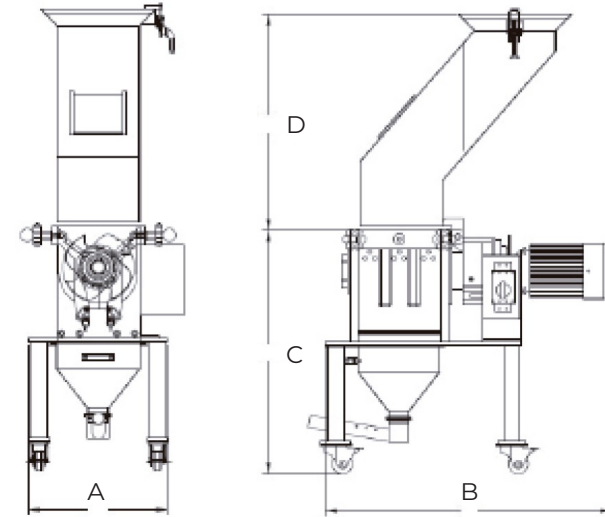
- EFCV is designed with operation in pressure or suction mode, to allow continuous production despite leakage from mould or connections.
- Automatic mould drainage ; drain the remains of medium when change the mould.
- Automation water refill (except oil operation), and remove the air in the pipes.
- Self-optimizing microprocessor controller with digital display of set and actual temperature.
- Electric control panel and machine are separated to obtain good effective isolation, and able to extend the service life of the electric parts.
- Rapid heating and cool off speeds, temperature is kept stable at all time.
- Complete with safety protection and error indication systems.
- Electrical circuit built to comply with CE safety equipment as option.
- Use German speck pump

Specification

Model		EFCV05	EFCV10
Power supply	V	AC220~440V, 3P 60HZ	
Temperature range	°C	Water50~90 °C , Oil 150 °C	
Media		Water ; Oil	
Heater	kw	6	9
Tank capacity	Ltr	15	
Cooling way		Indirect cooling	
Cooling capacity	kcal / hr	9000	
Temperature control	°C	PID (±0.5)	
Pump	type	Delivery pump (sealless)	
	power (kw)	0.5	1.1
	max. pressure 50 / 60HZ (kg/cm ²)	3.5	6
	max. output 50 / 60HZ (ltr / min)	60	70
Total power	kw	9.5	10.1
Min. water pressure	kg / cm ²	2	
Cooling water pipe	inch / set	1 / 2"PT	1 / 2"PT
Media pipe	inch / set	3 / 8"PT-4 in-outlet	3 / 8"PT-4 in-outlet
Dimension (LxWxH)	mm	760 x 300 x 600	
Weight	kg	45	45
Option		FCV vacuum funtion and auto refill (water type)	

EFS Series / Screenless Crusher

EFG180 Series / Low Speed Crusher



· Unique design of the tool cutting only can reduce dust bad and not easily broken.



- The unique design of the full-open fuselage disassembly is simple and fast.
- Fuselage surface after electroless nickel plating surface treatment, not only to increase the hardness of the cutting room, and play a rust effect.
- Feed hopper with double stainless steel production, and more to reduce the noise.
- Thi unique design of the cutting room full open, cutting room is not dead, clean-up, easier to maintain.



Drive part : This series of models using the R series helical gear transmission, increases torque.



The motor starter electrical parts used in Eaton's Admiralty Muller switch, better protect the motor.

Specification

Model		EFS250	EFS340
Drive power	kw	1.1	1.5
Chopped mouth	mm	252x252	252x341
Speed	rpm	32	32
Claw knife number		2	3
Cutter number		3	4
Body size (LxWxH)	mm	1000x460x1360	1100x460x1360
Grinding capacity	kg	≥10°C	≥20
Weight	kg	180	220
Grinding noise	db	60~73	60~75

	EFS250	EFS340
A	425	513
B	890	940
C	746	796
D	662	712



Rotor with a specially designed tool, the unique shape of the rotor knives ensure its remains fixed after regrinding cutting curve and cutting interval, do not need to adjust the tool through a complicated process, thereby reducing the disassembly tool downtime.

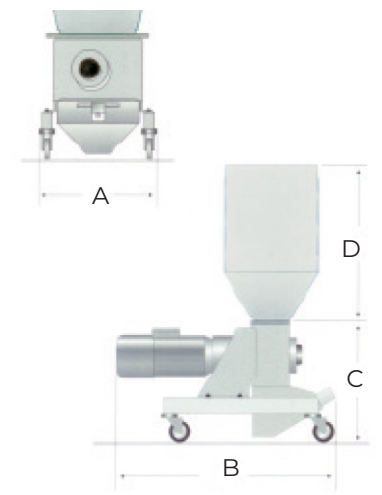


Rotor supported on two bearings, while the width of the rotor shaft according to the largest design, making it possible to shred massive objects. In addition, the ladder-shaped rotor blade design allows only one at any time during the cutting tool, thereby increasing the cutting torque.

ERAT production EFG low-speed crusher series, models from the EFG 180/120 to EFG 180/430, specially designed for crushing of recycled plastic waste generated in the molding process and the gate. ERAT production of low-speed crusher set the general common advantages such as low noise, less dust outside, still in its design, improved performance, such as special waste and for the broken gate and design tool, the rotor and efficient way to disassemble, reflecting the low-speed crusher ERAT humanity. Machine used gear transmission mode, an increase of torque, the machine can start at any time, even if broken material left in the crushing chamber, you can easily start the machine.

Specification

Model		EFG-1812	EFG-1818	EFG-1830	EFG-1843
Speed	rpm	150	150	150	150
Rotating blades		12	18	30	45
Fixed blades		2 (4 blade)	2 (4 blade)	2 (4 blade)	2 (4 blade)
Rotor diameter	mm	180	180	180	180
Rotor width	mm	120	180	300	430
Feeding size	mm	350 x 350	350 x 350	350 x 350	430 x 350
Cutting chamber	mm x mm	270 x 120	270 x 180	270 x 300	270 x 430
Motor output	kw	2.2	3.0	4.0	4.0
Weight	kg	120	130	150	170
Dimension					
W (A)	mm	420	420	420	420
L (B)	mm	850	910	1030	1240
H (C)	mm	450	450	450	550
H (D)	mm	600	600	600	900



EFG300 Series Medium Sized Crushers

EFC300 Series Soundproof Crushers



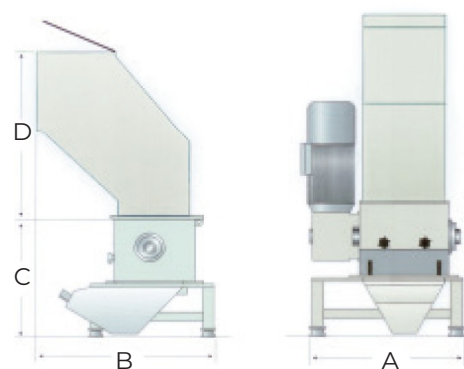
Ladder-shaped rotor arranged in V-shaped, so that it can be caught in the shredding room central broken material, this feature prevents the material posted on the wall in shredding room, while greatly increasing the shredding chamber wall in processing of glass fiber reinforced plastic products and when the wear resistance.

ERAT production of medium-sized crushers EFG 300/400 and FG 300/600 series, except with the EFG 180 series crusher of advantages, more suitable for plastic bottles and other blow molded products such as insulating materials, crushing, and its unique design of the ladder-shaped transfer arranged in V-shaped knife, to seize the central cavity in the broken broken materials needed to prevent the material

attached to the sidewall of the crushing chamber, ladder-shaped rotor design allows the machine broken material at any time only one tool in the be cut, thereby increasing the machine's cutting torque. In addition, EFG 300 crusher with its use can also be optional according to EFG 180 ways to use the series, making more extensive use of the machine.

Specification

Model		EFG-3040	EFG-3060
Speed	rpm	150	150
Rotating blades		33	48
Fixed blades		2 (4 blade)	4 (4 blade)
Rotor diameter	mm	300	300
Rotor width	mm	400	600
Feeding size	mm	400 x 400	600 x 400
Cutting chamber	mm x mm	400 x 400	600 x 400
Motor output	kw	7.5	11
Weight	kg	550	809
Dimension			
W (A)	mm	820	1100
L (B)	mm	1050	1010
H (C)	mm	710	710
H (D)	mm	1050	1050



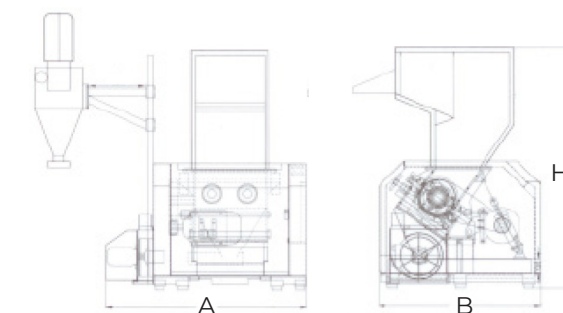
EFC series models economic, reliable, easy to clean and long service life.



With the crushing chamber of the "V"-shaped rotor designed to ensure safe and reliable operation, and is suitable for a variety of a variety of crushed material, and even larger material is no exception.

- Built-in enclosures: to ensure that the use noise reduction, and a unique tool designed to make it easier tool change.
- Simple tool to install: the adjustments using a tool to adjust the frame, the entire tool change process in the crusher, fixed knife and rotary cutter with high tensile strength steel, regrinding many times.
- The unique cutting mode: the tool of the rotor using the latest "V" shaped cutting technique, compared with the conventional tool, "V"-shaped design materials toward the center of the rotor

- while continuing cutting, "V"-shaped structure be able to reduce the wear of the tool and crushing chamber.
- The removable Compact design: built-in enclosures designed so that the entire model is very compact, you can move the entire machine can lift or move the forklift or other lifting equipment standards.
- Efficient feeding mode: Due to the unique rotor design, even if it is a continuous feeding, crushing chamber will not be clogged.



Specification

Model	Rotor Diameter(mm)	Width(mm)	Size(mm)	Drive Power(kw)	Width(A)(mm)	Length(B)(mm)	Height(C)(mm)
EFC-3030	Ø300	300 x 300	400 x 290	7.5	1300	1500	1900
EFC-3060	Ø300	300 x 600	400 x 590	15	1700	1500	2050
EFC-3080	Ø300	300 x 800	400 x 790	22	1900	1500	2050